



1 OLD SHIP COTTAGES

Bishops Sutton, Alresford, Hampshire SO24 0AA

TO LET

£1,800 pcm



1 Old Ship Cottages

Bishops Sutton, Alresford, Hampshire SO24 0AA

Alresford 1 miles | Winchester 8 miles | Alton 10 miles | London Waterloo from
Winchester Station – 1 hour | Mileages and times approximate

3 bedrooms

A refurbished and beautifully presented cottage located in the heart of this popular village, close to Alresford.

THE PROPERTY

1 Old Ship Cottage is a charming, characterful property which has just undergone a complete refurbishment throughout and is now presented in exceptional condition.

The house, which is Grade II listed and semi detached, is well located in the heart of Bishops Sutton, a popular village close to Alresford which features a public house, village hall and surrounded by open countryside.

The cottage features a large sitting room, which is double aspect and will have a woodburning stove. There is a well fitted kitchen and dining room with an electric range oven, dishwasher and fridge. Large utility and boot room, downstairs WC and cellar. Upstairs there are three bedrooms, with a good size family bath and shower room.

Outside, there is off road parking for 2 cars and a single garage. The garden, which is in front of the house is a good size and will be laid to lawn.

ADDITIONAL INFORMATION

Services
Private water from bore hole and private draining £35 per month
Air source heat pump
Secondary glazing
Mains electricity

Local Authority
Winchester City Council, band E

EPC
D67

Pets
Considered, rent may vary

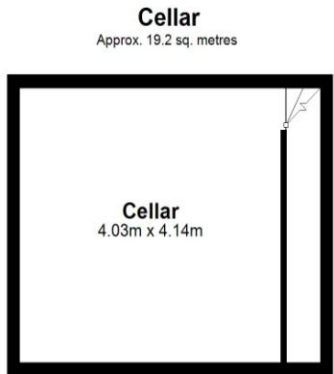
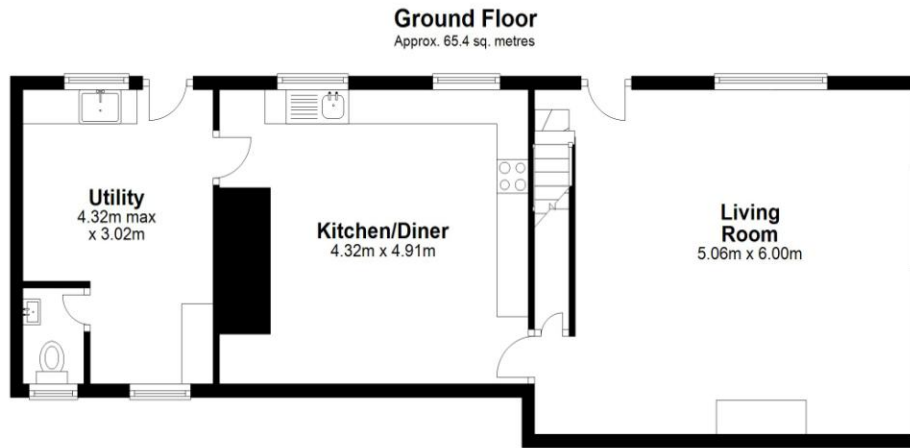
Holding deposit
£415

Deposit
£2,075

Internet
Superfast fibre broadband available. Good mobile coverage

Access
Neighbour has right of way across path to access their garage





Total area: approx. 150.6 sq. metres
1 Old Ship Cottages

DIRECTIONS

From Winchester take the A31 to Alresford and Alton. Upon reaching the first roundabout after the dual carriageway, take the second exit, continuing on this road. At the next roundabout, take the first exit signposted to Bishops Sutton. Upon entering the village, by The Ship pub on your right, 1 Old Ship Cottage will be on your left.

Score	Energy rating	Current	Potential
92+	A		
81-91	B		84 B
69-80	C		
55-68	D	67 D	
39-54	E		
21-38	F		
1-20	G		

WINCHESTER

BCM, The Old Dairy, Winchester Hill,
Sutton Scotney, Winchester SO21 3NZ

T 01962 763 900 E info@bcm.co.uk

ISLE OF WIGHT

BCM, Red Barn, Cheeks Farm,
Merstone Lane, Merstone, Isle of Wight PO30 3DE

01983 828 805 E iow@bcm.co.uk

OXFORD

BCM, Sunrise Hill Yard, East Ilsley,
Newbury RG20 7LY

T 01865 817 105 E oxford@bcm.co.uk



rural property specialists